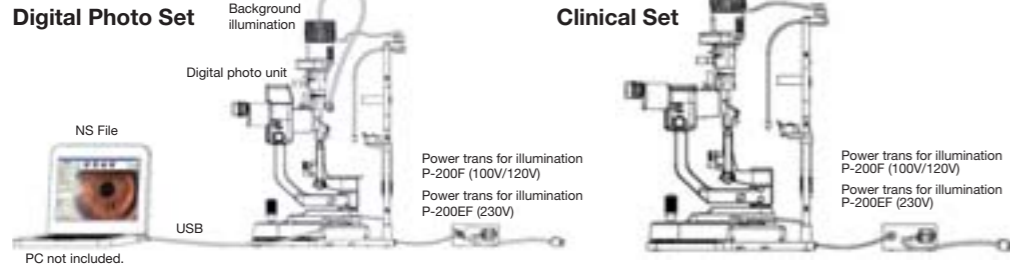


System Diagram



NS File

Each slit lamp requires an NS File set.

Patient Information Screen



Patient Information
ID, Full Name, Sex, Birthday, Text Memo

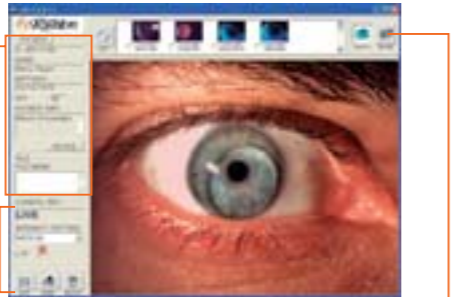
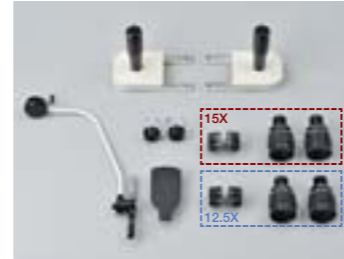


Image mode switch (stills or video)
Image capture conditions: Left/Right/Auto, text memo
Brightness: LIGHT EYE / MEDIUM EYE / DARK EYE

Language:
English (UNICODE-compliant)

Print size:
Photo printer, A4, A6, letter size
(vertical: 6 pcs/2 pcs/1 pc,
horizontal: 6 pcs/2 pcs/1 pc)

Optional accessories



Either a 12.5x or 15.0x eyepiece comes as a standard accessory, while the other is optional.



Breath guard

Note: Righton does not manufacture tonometers.

Righton

Zoom Slit Lamp NS-2D

Digital Photo Set / Clinical Set

Main Specifications of Righton Zoom Slit Lamp NS-2D

Microscope	
Type	Greenough type
Variable magnification	Continuously variable magnification by manual zoom
Angle of inclination	12.5°
Objective magnification	-0.47x to -2.6x (zoom ratio: 5.5)
Eyeiece magnification	12.5x, 15x
Total magnification	5.9x to 32.5x (with 12.5x eyepiece), 7.1x to 39x (with 15.0x eyepiece)
Magnification click stops	6x, 10x, 15x, 20x, 25x, 30x, 32.5x (with 12.5x eyepiece) 7.2x, 12x, 18x, 24x, 30x, 36x, 39x (with 15.0x eyepiece)
Eyeiece diopter adjustment range	-8D to +8D (with 12.5x eyepiece), -6D to +6D (with 15.0x eyepiece)
PD adjustment range	55 mm to 75 mm
Barrier filter	Built-in, dial in/out
Illumination system	
Type	Goldman type
Light source	12V-30W halogen lamp
Slit projection magnification	1x
Slit width	0 mm to 16 mm continuously variable
Slit rotation angle	90° to right and left
Slit length	ø0.2, 1, 2, 5, 10, 14, 16 mm, 0 to 12 mm continuously variable
Slit vertical angle	0°, 5°, 10°, 15°, 20° from lower angle
Filters	Heat absorbing, ND (28% reduction), red-free, blue, UV cut (regular use)
Halogen lamp voltage	5 to 12V, 12.5V (boost)
Arm unit	
Rotation angle	90° to right and left
Cross slide table	
Horizontal movement	100 x 110 mm (joystick operation)
Vertical movement	30 mm (joystick rotation)
Control switches	Shutter switch (on top of joystick) Illumination adjustment knob (on the cross slide table) Boost switch (on the cross slide table) R/L selector switch (on the cross slide table)
Electrical specifications	
Input voltage	AC100V/120V (P-200F), AC230V (P-200EF)
Power consumption	82W (max.)

Dimensions	
Distance from table top to patient's eye	375 mm
Working distance	100 mm
Reaching distance (from eyepiece to patient's eye)	314.0 mm (with 12.5x eyepiece) 316.4 mm (with 15.0x eyepiece)
Distance from table top to optical axis	339 mm
Main body	330 (W) x 735 (H) x 405 (D) mm
Weight	
Main body	Approx. 13.0 kg (without CCD imaging unit) Approx. 13.5 kg (with CCD imaging unit)
Power trans. for illumination (P-200F)	Approx. 2.3 kg
CCD imaging unit	
CCD	1/1.8" CCD, 2,010,000 effective pixels
Still image output	1600 x 1200 pixels (UXGA)
Video image output	800 x 600 pixels (SVGA)
Frame rate	Max. 30 fps
Beam-split ratio	70% for camera and 30% for eyepiece
Operating environment	
OS	Windows XP (32-bit only), Windows Vista (32-bit only)
CPU	Recommended: Pentium (Dual-Core) 2.0GHz or greater
Memory	XP: 1GB or above, Vista: 2GB or above
Hard disk	Still image: Approx. 200KB per file Video: Approx. 200MB per minute
Interface	USB 2.0
Monitor	XGA (1024 x 768 pixels) or greater
NS File	
Still image shooting	Review display time setting: 1 to 10 sec.
Still image format	JPEG
Movie shooting	Time setting: 10 to 180 sec. arbitrary
Movie format	AVI (MPEG-4 codec, on CD)
Patient information	Search by ID, full name, sex
Shooting data	Shooting date and time, R/L information (auto entry), text memo
Print	Print format, PREVIEW, printer setting
Language	UNICODE-compliant

WARNING: To ensure correct usage, read all manuals carefully before using equipment

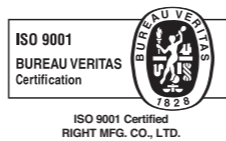
Specifications and equipment are subject to change without any notice or obligation on the part of the manufacturer. © 2009 RIGHT MFG. CO., LTD.
The information in this brochure is valid as of August 2009.

RIGHT MFG. CO., LTD.

Ophthalmic Sales
1-47-3, Maenochi, Itabashi-ku, Tokyo 174-8633, Japan
Tel: +81-3-3960-2275 Fax: +81-3-3960-2285
e-mail: eigyousitsu@rightmfg.co.jp

TOHOKU RIGHT MFG. CO., LTD.

Ophthalmic Service
45-1, Aza-yashikimae, Nakamura Osato-cho, Kurokawa-gun, Miyagi 981-3521, Japan
Tel: +81-22-359-3113 Fax: +81-22-359-3413



ISO 9001 Certified
RIGHT MFG. CO., LTD.



Genuine Zoom Slit Lamps from *Righton*

New-generation Zoom Slit Lamp NS-2D Clinical Set

- Converging-type zoom microscope (12.5°)
- 5.5x wide zoom ratio, yet a shorter reaching distance of 317 mm and a longer working distance of 100 mm.
- Two eyepiece magnifications are available.
12.5x eyepiece: Total mag. 5.9x to 32.5x (field of view: 38.3 mm, field number: 18.0 mm)
15.0x eyepiece: Total mag. 7.1x to 39x (field of view: 38.3 mm, field number: 18.0 mm)
- Sharp and clear high-resolution zoom optics — inherited technology
- A CCD digital set can be mounted on the NS-2D Clinical Set.

PD adjustable with one hand only

Right and left eyepiece tubes are synchronized, so PD can be adjusted with one hand only.



PD adjustment:
52 mm to 75 mm

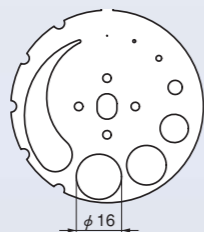
Wider eyepiece diopter adjustment range



Eyepiece diopter adjustment range has been widened to $\pm 8D$ with 12.5x eyepiece and $\pm 6D$ with 15x eyepiece. The high eye position design makes viewing easier.

Slit length

The maximum slit length is 16 mm. Preset lengths of $\emptyset 0.2$, 1, 2, 5, 10, 14 mm and continuously variable lengths of 0 to 12 mm are also available.



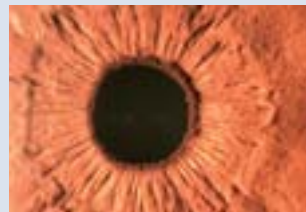
Wide view & high magnification

(Photos for illustrative purposes only)



With 12.5x eyepiece:

5.5x wide view; operator can see all of anterior segment when using slit length of 16 mm. (Diopter adjustment range is $\pm 8D$.)



With 15.0x eyepiece:

Magnification up to 39x (Diopter adjustment range is $\pm 6D$.)



Built-in barrier filter (standard equipment)

Simple dial operation makes it easy to set filter on and off. Fluorescence images can be captured when a blue filter is also used.



Fixation lamp

Easy-to-use flexible arm; yellow-green LED



Wide-angle isocentric movement

When isocentric knob is loosened, slit can be moved 8 mm to right or left. Convenient for retroillumination and scleral scatter for corneal surface.



Boost switch

Boosts illumination to maximum 12.0V



Filters

Heat-absorbing filters x 2 pcs, ND (28% reduction), red-free, blue, UV cut (constant)

Slit tower tilting

Slit tower can be tilted, with stops at 5°, 10°, 15° and 20°.

Note: Righton does not manufacture tonometers.

New-generation Zoom Slit Lamp NS-2D Digital Photo Set

- Images can be captured with a simple press of the joystick button.
- CCD digital images (1/1.8-inch CCD, UXGA 1600 x 1200 pixels)
- Both movie and still images can be captured.
- Still images can be captured from LCD monitor in real time.
- Movie frame rate is 15 fps with PC incorporating Intel®/AMD® CPU 1.0 GHz or higher*.
- * Use a PC with Intel®/AMD® CPU 2.0 GHz or higher to enable a movie frame rate of up to 30 fps.
- Movie SVGA: 800 x 600
- When the cross slide table is moved, NS-2D automatically distinguishes between right and left eye. The image is displayed on NS File.
- Three brightness levels are available for NS File that suit eye color pigmentation or condition of patient: [LIGHT EYE] (blue, green, hazel, etc.), [MEDIUM EYE] and [DARK EYE] (dark brown).
- Image capture files
Original NS File comes with digital photo set.
- Beam-split ratio is 70% for camera and 30% for eyepiece.
- Smaller camera design makes it easy to operate.



Note: A PC is not included in the set. NS File cannot be used with the RS-1000. When connecting to an outside filling system, ask your distributor for advice.



Anterior segment (diffuse illumination)



Cornea



Cornea (background illumination on)



Cornea (scleral scatter)



Iris (tangential illumination)



Conjunctiva (diffuse illumination)



Fluorescence image



Endothelium (Must be enlarged)



Disk (with 90D lens)